

Portable  
BROADBAND SEISMOGRAPH

SAMTAC-802C & VSE-15D

**TOKYO SOKUSHIN CO., LTD.**

3-14-34, OUGI, ADACHI-KU.TOKYO.

TEL 03-3855-5911 FAX 03-3855-5921

URL <http://www.to-soku.co.jp>

- ◆ Survey of an underground structure
- ◆ After-shock, micro-earthquake and micro tremor measurement

### SAMTAC-802 series

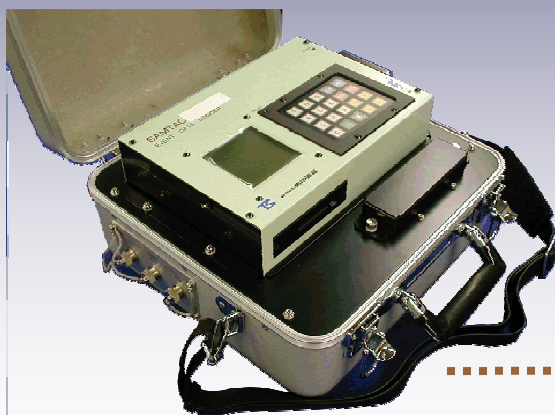
24bit, 3 or 6 channels

26 hours operation by internal battery

Storage media:

CF card: SAMTAC-802C

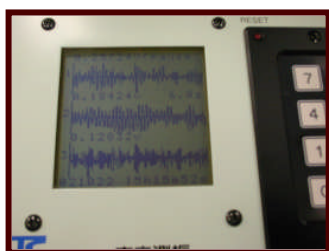
Hard Disk: SAMTAC-802H



330(W)×316(D)×180(H)



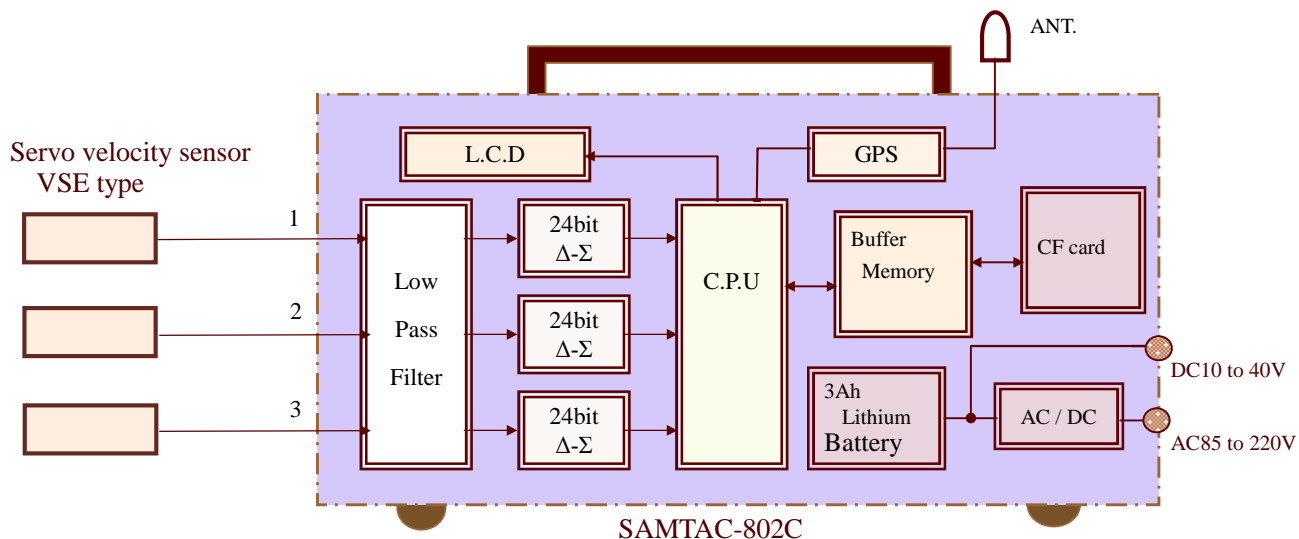
Real time wave monitor



Servo velocity seismometer

0.2Hz to 70Hz, Full scale  $\pm 10$  kine

Resolution max 0.0001Gal



## SAMTAC-802C, 802H

<b>Pre Amp</b>		<b>Set Parameters</b>	
Channels	3 channels(CF card: 802C-3 / HDD: 802H-3) 6 channels (CF card: 802C-6 / HDD: 802H-6)	Manual	10 key and 10 function key
Input	Differential	Functions	Time window / Trigger condition / Trigger channel / Sampling frequency / Amp gain / Buffer size / Offset cancel
Input impedance	100kΩ	<b>Display &amp; Function</b>	
Gain	0, 20, 40, dB	Type	160 × 160 dot liquid crystal, with back light
Range	±10.24V at 0dB	Display	3ch wave display (input wave, recorded wave) parameter, GPS time & position, A/D check, LCD check
Offset Drift	0.25μV / °C	<b>Auxiliary</b>	
Noise	4μV / (rms)	RS-232C interface	Via modem of direct communications, data retrieve, parameter setting, self-check, or memory remaining.
Low-pass Filter	fo = 200Hz, 18dB / Oct	Power supply For External sensors	±15V (80mA)
<b>AD converter</b>		<b>Power supply</b>	
Resolution	24bit	Line input	AC85 to 220V (Max. 3A)
Dynamic Range	130dB		DC10 to 40V (Max. 4W)
Bandwidth	0 to 0.8Nyquist Digital Filter		GPS on : +2W
Sampling Rate	50, 100, 200, 400, 500Hz		H.D on : +12W
Full scale Error	1%	Internal Battery	7.2V, 5.4Ah (Lithium ion) × 2
Full scale drift	60μV / °C		Operate time Max. 30hours without external power source, (Continuance recording mode. GPS off, No external sensor power supply)
<b>Triggering</b>		<b>Environmental</b>	
Mode	Micro tremor / Earthquake	Operating Temperature	0°C to 55°C
Level trigger	1mV ~ 9.999V (1mVstep) AND, 2AND, OR	Dimension	330 (W) × 316 (H) × 180 (D) mm
Pre-event memory	0 to 255sec.	Weight	Approx. 6kg
Post-memory	0 to 255sec.	<b>Accessory</b>	
<b>Timing</b>		GPS Antenna	Cable length 5m
Base	±0.05PPM (MCXO)	Input Cable	1.5m × ch
Synchronization	GPS	Power Cable	AC cable 1.5m, DC cable 1.5m
GPS power control	Manual, Continuance Time window	<b>Soft ware</b>	
Δt	Measurable (0.3μsec.)	Type	Microsoft Windows compatible
<b>Storage</b>		P-wave	Wave monitor, FFT analysis. Filter(L.P.F, H.P.F) Integral, Differential
Media	CF card (2GB) or Hard Disk (80GB)		
Max. Recording	26 hours (card), 510 days (HD), 3ch 100sps		
Header	Time of event instrument location (Latitude, Longitude. Elevation. Serial number)		
Capacity	2GB (CF card), 40 to 80GB (HD)		

## VSE-15D

Model	VSE-15D	Dynamic Range	Approx. 140dB
Span	±0.1m/s	Max. Output	±10V
Frequency Range	0.2 to 70Hz	Calibration Coil	6μA / Gal
Sensitivity	(Low) 100V/m/s (High) 1000V/m/s	Power Requirement	±15V
Resolution	10 <sup>-7</sup> m/s <sup>2</sup> (10 <sup>-5</sup> Gal)	Environment	-30°C to 70°C, 90%Rh



Recorder  
**SAMTAC-802C or 802H**

The specification may change without notification because of the proved product.

**TOKYO SOKUSHIN CO., LTD.**

3-14-34, OUGI, ADACHI-KU.TOKYO.  
TEL 03-3855-5911 FAX 03-3855-5921  
URL <http://www.to-soku.co.jp>

Dated: April 2010